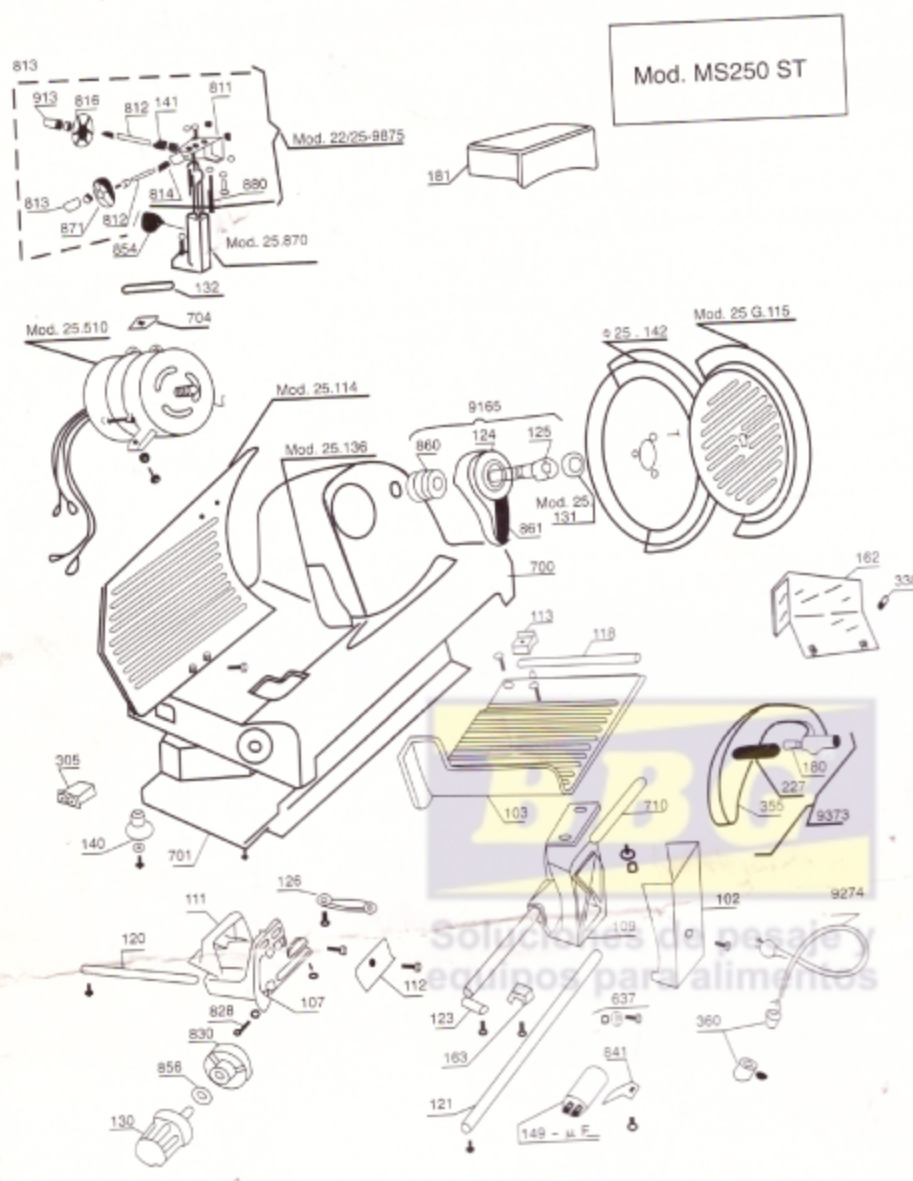
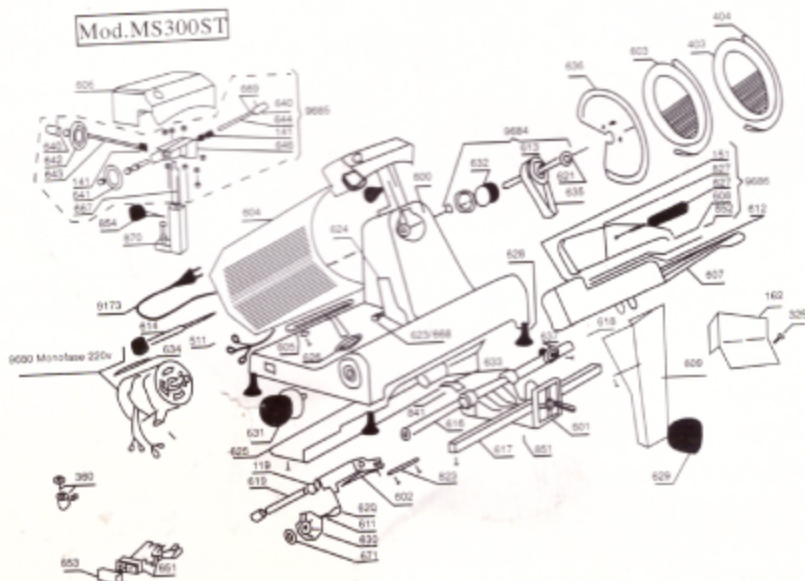


## DESCRIPTION OF SPARE PARTS



Mod. MS250 ST

Mod. MS300STI



- 102 Food tray support covering
- 100 Food tray
- 107 Slider
- 109 Carriage
- 111 Slider cap
- 112 Slider cap frontal
- 113 Bearing
- 114 Movable bulkhead
- 115 Knife guard
- 118 Shaft
- 119 Bushes
- 120 Slider rail shaft
- 121 Carriage guide shaft
- 123 Lock plate
- 124 Blade pulley
- 125 Pulley pin
- 126 Slider rail plate
- 130 Graduated knob
- 131 Knife guard spacer
- 132 Motor fulcrum pin
- 136 Slice deflector
- 140 Case foot
- 141 Counterburr wheel spring
- 142 Blade - 250
- 149 Condenser/Spooley mt...
- 151 Stop L - 9.5 on foot grip
- 162 Tray fingerguard
- 163 Sliding block on carriage
- 180 Bush
- 181 Sharpener cover
- 305 Tow-button on/off switch
- 314 Internal blade wheel 25 G/A
- 315 External blade ring 22 G/A-220/A
- 325 Finger guard spacer
- 327 Food holder hand pin
- 338 Spacer
- 355 Food holder arm
- 360 Cable lock
- 403 Internal blade ring 300/A
- 404 External blade ring 300/A
- 510 Electric motor
- 511 Cable lock
- 600 Casing
- 601 Carriage
- 602 Slider
- 603 Knife guard
- 604 Movable bulkhead
- 605 Bearing
- 606 Sharpener cover
- 607 Food tray
- 608 Food holder arm
- 609 Tray support
- 611 Cam pin
- 612 Food holder pin
- 613 Pulley
- 614 Knife guard knob
- 616 Carriage sliding bar
- 617 Carriage square supporting bar
- 618 Carriage spring
- 619 Slider sliding shaft
- 620 Cam feeling pin
- 621 Pulley pin
- 623 Slider deflector pin
- 624 Side deflector
- 625 Bottom plate
- 626 Cable guard
- 627 Hand grip
- 628 Feet
- 629 Carriage knob
- 630 Cam
- 631 Graduated knob
- 632 Ball bearings
- 633 Condenser
- 634 Motor fulcrum pin
- 635 Belt 5V.400
- 636 Blade
- 637 Carriage ball bearing
- 648 Bottom
- 641 Coarse grain emery wheel
- 642 Fine grain emery wheel
- 643 Counterburr wheel pin
- 644 Grinding wheel pin
- 645 Sharpener body
- 651 Double button
- 653 Button protection cap
- 667 Sharpener support pin
- 689 Wheel
- 671 Elastic washer internal
- 700 Base
- 701 Covering
- 704 Hinge plate
- 710 Carriage sliding shaft
- 811 Sharpener body
- 812 Wheel pin
- 813 Button on sharpener pin
- 814 Spring
- 816 Fine grain emery
- 823 Slider plate
- 827 Points
- 828 Cam feeler
- 830 Cam
- 841 Condenser look plate
- 851 Grain M6
- 852 Bushes
- 854 Sharpener locking knob
- 855 Blade - 200
- 856 Elastic washer internal
- 860 Ball bearing
- 861 Belt V.330
- 862 Ball bearing
- 870 Sharpener group base
- 871 Coarse grain emery wheel
- 880 Sharpener support pin
- 891 Internal blade wheel 250/A
- 892 Internal blade wheel 220/A
- 9165 Pin with pulley
- 9173 Cable
- 9274 Schuko cable
- 9373 Food holder arm
- 9680 Electric motor
- 9684 Pulley block
- 9685 Sharpener group
- 9875 Fixed sharpener group